

## AppPerfect Java Profiler

AppPerfect J2EE/JVM Profiler helps you diagnose and resolve performance problems, memory leaks and multi-threading problems in your Java applications to ensure the highest level of stability and scalability for your applications. AppPerfect J2EE/JVM Profiler provides you with a root-cause analysis of these problems and helps you resolve them.

AppPerfect J2EE/JVM Profiler provides you a unified view of all resources that is memory, methods, threads and monitors to help you understand your JVM's behavior, performance characteristics etc. to reach to bottom of problem quickly.

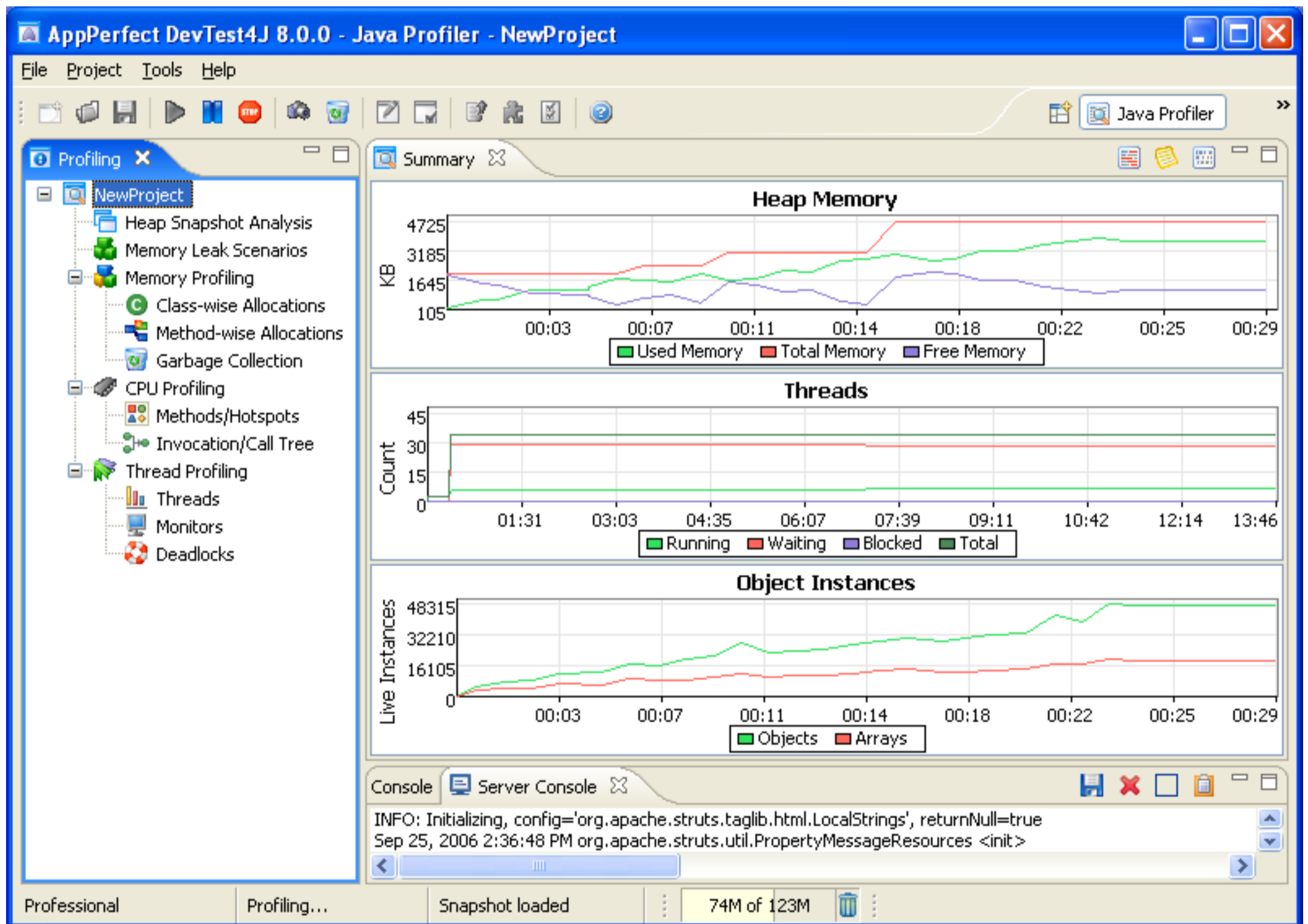
AppPerfect J2EE/JVM Profiler is a comprehensive Java performance tuning solution with support for Heap Analysis, Thread Analysis and Monitor analysis.

### Key Features

- **Comprehensive Profiler:** AppPerfect J2EE/JVM Profiler is a comprehensive JVMPi-based profiler for heap/memory analysis, performance/CPU analysis and thread analysis. JVMPi is used for JDKs less than JDK1.5 and for JDK1.5 & above JVMTI is used.
- **IDE Integration:** AppPerfect J2EE/JVM Profiler supports IDE integration with most commonly used IDEs. This enhances ease-of-use and productivity. Currently supported IDEs are Eclipse, NetBeans, IntelliJ, JBuilder, JDeveloper and Workshop.
- **Easy to use UI:** The application provides easy to use UI with charts, graphs, wizards etc. that help you identify the problems in your application quickly. These views/reports can be exported into 3 different formats: HTML, PDF and CSV.
- **Dynamic Instrumentation:** AppPerfect J2EE/JVM Profiler uses advanced Dynamic Instrumentation library for extremely low profiling overhead and quick startup time.
- **Supports all types of applications:** AppPerfect J2EE/JVM Profiler supports client-side (applications, applets) as well as server-side (EJBs, JSP/ servlets) profiling.
- **Supports commonly used AppServers:** AppPerfect J2EE/JVM Profiler supports most commonly available Java AppServers: BEA WebLogic, IBM WebSphere, JBoss, Apache Tomcat, Oracle Server, SunOne. It can profile any application or appserver even when its not present in supported list provided proper VM parameters are passed while starting application or appserver.

### Screenshot

Rule violations status based on files:



### Supported Products

- JDK : JDK 1.3.x, JDK 1.4.x, JDK 1.5.x, JRocket 1.4.2 and higher, IBM JDK 1.3.1 and higher
- OS : Windows 2000/XP/2003, Linux x86, Solaris 8/9, Mac OS X
- IDE : Eclipse 2.1.x/3.0, NetBeans 4.0/4.1/5.0, IBM WSAD 5.1.x, IBM RAD 6.0, IntelliJ 3.0.5/4.0/4.5/5.0, JBuilder 9.x/10.x/2005/2007, JDeveloper 9.x/10.x
- AppServer : Apache Tomcat 4.x/5.x; BEA WebLogic 7.x/8.x; IBM WebSphere 5.x; JBoss 3.x/4.x; Macromedia JRun 4x, Resin2.x/3.x, Orion 2.x, OracleAS 10g, Jetty4.x/5.x, SunOne 7.x/8.x

### Availability & Download

AppPerfect J2EE/JVM Profiler is a component of the **AppPerfect DevTest4J**. AppPerfect J2EE/JVM Profiler is not sold separately. The AppPerfect DevTest4J is shipped in two different versions: Standard and Professional. The AppPerfect DevTest4J - Standard Edition is free for non-commercial use only. Visit <http://www.AppPerfect.com/sales/index.html> for price information and purchasing options for AppPerfect DevTest4J - Professional Edition.

A free 15-day evaluation version of the AppPerfect DevTest4J - Professional Edition can be downloaded from <http://www.AppPerfect.com/download/index.html>. At the end of 15 days, you must purchase a license, else the software will automatically convert to the Standard Edition.